

Lent 2026

Resources for group use



The Church of England
Diocese of Ely

The season of Lent can be a time when churches will form Lent groups that focus on a particular issue/challenge/theme as part of their journey of discipleship. Lent Groups can be places where people come together to worship, to study the Bible, to discuss and begin to apply learning to their everyday lives. They can be a place of growth: growing in their relationship with God and growing in their relationship with one another.

The Mission and Ministry Department has sought to support that journey by signposting parishes to resources they may find helpful, which are included here.



The Church of England
Diocese of Ely

Draw Near: Life-giving habits for Lent

The Church of England's theme this Lent is **Draw Near**. In Lent we journey with Jesus on the difficult and thorny road that leads all the way to the cross on Good Friday – and beyond, to the transformation of Easter Day.

This year's resources have at their heart the theme of a 'rhythm of life' – habits and patterns which help us grow as disciples of Christ day by day, especially as we prepare to celebrate the great mystery of God's saving love at Easter.

During Lent, reflections are centered around a summary of the Christian Way from Common Worship, which identifies six activities essential to our calling as disciples.

Each week a different contributor explores a different aspect of Christian discipleship – **worshipping** together, **praying, exploring the Bible**, sharing **communion**, offering **service** and **sharing the good news** with others.



The Church of England
Diocese of Ely

Discover more at
cofe.io/DrawNear

**'Draw near to God, and he
will draw near to you.'**

James 4.8

"Draw Near is all about teaching us how we can cultivate the habits and practices that will draw us nearer to God. And we will find that, in doing so, God will draw nearer to us, too."

*Archbishop-elect Sarah Mullally & Archbishop
Stephen Cottrell*



The Church of England
Diocese of Ely

Discover more at
cofe.io/DrawNear

Draw Near Resources

- Full-colour booklets for adults, and children and families, are available to order from Church House Publishing.
- The Everyday Faith app will carry reflections for adults every Monday to Saturday throughout Lent, based on the booklet.
- Preview all themes and readings from the Draw Near reflections here.
- Preview sample pages from Draw Near with 40acts for families and children.
- Resources for Groups: A plan for those looking to use the Draw Near Reflections with small groups, prayer groups or as a Lent course.
- **A challenge for families and children** to explore the life-giving habit of generosity this Lent, produced in partnership with 40acts.
- As well as an act of generosity, each day also offers a simple Bible verse, reflection and prayer ideal for families, children, school and church groups to do together.
- A selection of resources for all age worship from ROOTS and Messy Church ideas, shared as part of 40acts.



The Church of England
Diocese of Ely

Discover more at
cofe.io/DrawNear



The Church of England
Diocese of Ely

Ripple Effect

Lent calls us to reflect on faith in action, perseverance through challenge, and care for God's creation.

The resources can be downloaded here: rippleeffect.org/lent



Green Christian

Lent is a season of penance, prayer and repentance, where repentance can mean not only regret and remorse, but also a "change of mind", a turning around to the right path.

Humanity certainly needs Lent. Let us model it where we can.

Recommendations for lent from Green Christian:
greenchristian.org.uk



BRF Resources

Each year, BRF publishes a Lent book of readings from Ash Wednesday to Easter Sunday each exploring a different theme, but all drawing us back to the truths of Easter.

BRF's selection of Lent books include titles suitable for individual and personal reflection as well as for small groups and whole church communities.

brfresources.org.uk



Lent



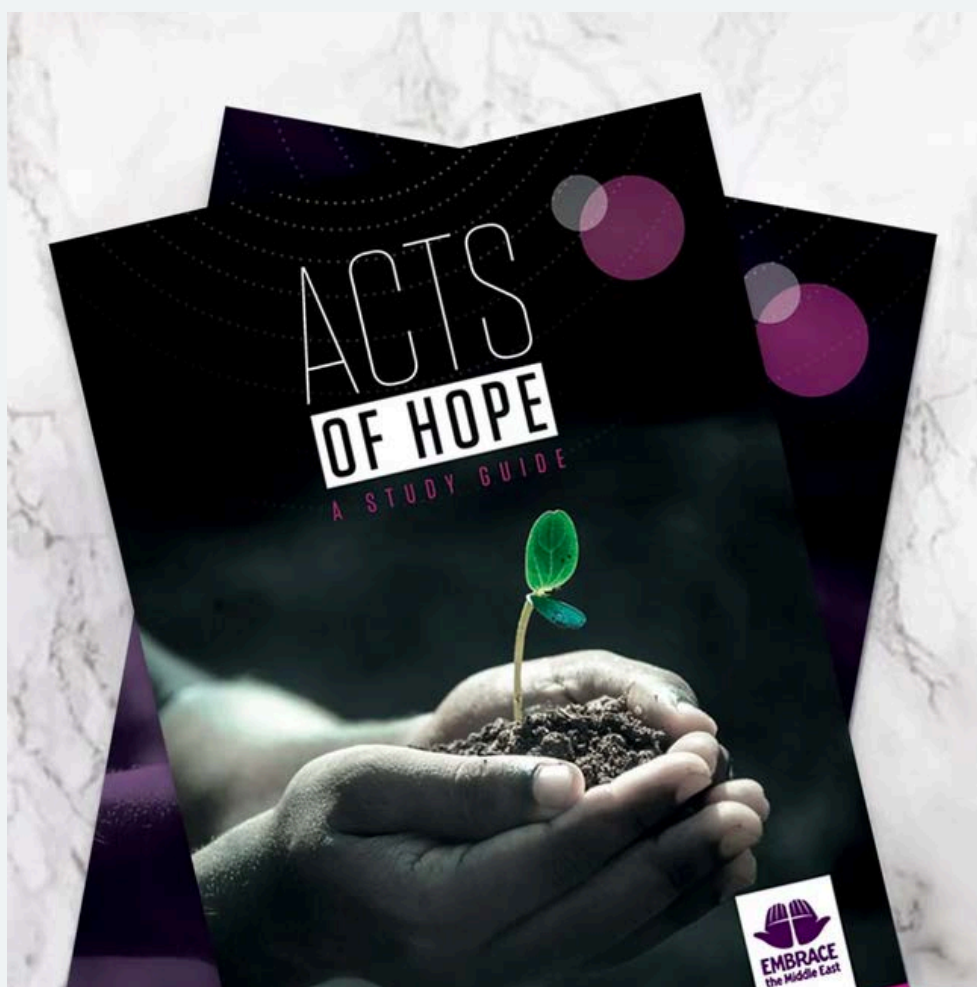
BRF 
Resources



The Church of England
Diocese of Ely

Acts of Hope - Embrace the Middle East

Inspiring study guides exploring biblical truths, life in the Middle East today and humbling stories from our Christian Partners across Egypt, Iraq, Israel, Lebanon, Palestine and Syria – tackling poverty and injustice and bringing hope to the poorest and most vulnerable communities:
shop.embraceme.org/lent



The Church of England
Diocese of Ely

Belonging in Christ

– Churches together in Britain & Ireland



Offering a hope-filled vision of peace for all

Weekly reflections on the themes of identity-based conflict, barriers to belonging and the resulting pressures on relationships. Our conversations have been empowering and hope-filled. We find support in the solidarity with people who share the same concern for wounded communities and encounter hope in the gift of our shared faith, central to which is Christ's promise of peace.

ctbi.org.uk/lent



The Church of England
Diocese of Ely