

PARISH PROFILE
FOR
ST MARGARET OF ANTIOCH CHURCH
HEMINGFORD ABBOTS
AND
ST JAMES CHURCH
HEMINGFORD GREY



Table of Contents

FOREWORD BY THE ACTING BISHOP OF ELY, DAGMAR WINTER.	3
INTRODUCTION	4
WHAT THE TWO PARISHES OFFER TO THE INCUMBENT	5
WHAT WE ARE LOOKING FOR FROM THE NEW INCUMBENT	6
CHALLENGES FACING OUR CHURCHES	7
ST MARGARET OF ANTIOCH, HEMINGFORD ABBOTS	8
THE PARISH CHURCH OF ST JAMES HEMINGFORD GREY	13
APPENDIX A DIOCESE AND DEANERY	22
APPENDIX B DESCRIPTION OF THE PARISH OF HEMINGFORD ABBOTS	24
APPENDIX C HEMINGFORD ABBOTS - BUILDINGS AND HISTORY	25
APPENDIX D DESCRIPTION OF HEMINGFORD GREY VILLAGE	27
APPENDIX E CONTACT DETAILS	29

Foreword by the acting Bishop of Ely, Dagmar Winter.

Thank you for taking an interest in this post in the Diocese of Ely. The role of incumbent of Hemingford Grey and Hemingford Abbots is significant to the Diocese as it provides leadership of 2 strong parishes on the edge of Huntingdon. These are delightful places to live and minister, and we believe that both experienced clergy or those emerging from curacy will be equally welcomed and stretched by the opportunities here.

Whilst these parishes are relatively affluent, the town of Huntingdon has significant pockets of deprivation, and these parishes have a role in sustaining mission in the nearby towns. We need the next incumbent to be committed to the Deanery and Diocesan mission objectives, as well as to the leadership of these benefices.

As a diocese, we need clergy who are:

- Confident in God - rooted in prayer and scripture.
- Committed to personal holiness and striving for professional excellence.
- Adventurous and visionary.
- Mission-focused leaders who want to see the church deeply engaged with schools, serving the community and connecting with community organisations of all kinds.
- Resilient people who take risks, accept failure and try again.
- Empowering and enabling collaborative ministry.
- Hospitable and generous when engaging with the local community
- Open and willing to work with and learn from others.

We understand that the debates in Synod about the welcome of people in same sex relationships has divided and perplexed some church communities. As senior leaders, we are committed to supporting those clergy who would wish to welcome to their church same-sex couples in order for them to offer prayers of dedication to God and to receive God's blessing (once these prayers are permitted), as well as those who for reasons of belief and conscience are unable to do so. Likewise, we respect PCCs with these different positions. If there is a tension between the position of the PCC and the clergyperson, in either direction, we would like to encourage both to find a generous space that allows each to follow their conscience. What this might look like will vary from context to context, and together we will support any process that helps us all to grow and to grow together in Christ.

We are grateful that these parishes have opened up a generous route through difference, and we pray that candidates will feel assured that in applying for this post, they will be welcomed and supported in their leadership.

Enquiries about this post can be made to the Archdeacon of Huntingdon and Wisbech, Ven Richard Harlow, on 07415757527 or archdeacon.handw@elydiocese.org



Dagmar, Bishop of Huntingdon



Richard, Archdeacon of Huntingdon

INTRODUCTION

The PCCs of St James Hemingford Grey and St Margaret of Antioch Hemingford Abbots present this joint profile desiring continued and further unity between our two churches.

We are distinct parishes and congregations, each with their own traditions but both eager to learn, grow and be led where God wants to take us.

The role is for Incumbent of both parishes. The parishes work well together, sharing LLMs (Readers), retired Clergy, administrative staff and musicians. We wish to build on this collaboration without losing the distinct character of each church and its engagement with the communities they each serve. The current interregnum has given greater momentum to this cooperation with the churchwardens from both parishes working even more closely together.

The Ministry Teams, PCCs and volunteers are excited about working alongside the new Incumbent to progress our mission in both parishes. Each church is secure in its values and vision and will look to the Incumbent to support and encourage them as they seek to live out their values and implement their vision.

The churches have different styles of worship:

St James' has a long-held evangelical tradition and uses a varied pattern of worship; St Margaret's uses both Common Worship and the BCP.

During the interregnum, regular services have been maintained, special services held (baptism, weddings, funerals), Youth and Children's Ministry delivered, Prayer Groups and Home Groups continue to meet.

St James is under the patronage of the Church Pastoral Aid Society. Mrs Libby Witt currently acts as Patron of St Margaret's, representing the Trustees of the estate of the late Lord Hemingford.

The two parishes are both situated on the banks of the beautiful River Great Ouse in Cambridgeshire and are two of the most attractive villages in England, attracting some tourism.



WHAT THE TWO PARISHES OFFER TO THE INCUMBENT

- Two lively and distinct parishes and congregations, each with their own traditions and styles, but both eager to learn, grow and be led where God wants to take us.
- Unwavering support and friendship from the people in both congregations.
- The opportunity for personal, professional and spiritual growth.
- A rich resource across both parishes of an Associate priest, retired priests, plus both licensed and unlicensed laity, all already involved in leading worship services and preaching. St James PCC also employs a Youth and Children's Minister.
- Enthusiastic, energetic and skilled teams of people thoroughly involved in all aspects of the life of the two churches.
- Church congregations reaching out to their village communities.
- Well managed finances and a history of meeting our Ministry Share request in full each year
- Full administrative support.
- Ability to meet and pay out of pocket expenses.
- A strong musical tradition, but different, at both churches.
- A modern parsonage.
- Well maintained Church Buildings in excellent condition.
- Good connections by road and rail with all of the country.
- Easy and quick access to both the cities of Cambridge and Peterborough.
- Access to a wide range of schools both public and private.



WHAT WE ARE LOOKING FOR FROM THE NEW INCUMBENT

- They will have a vibrant faith and love of God and are passionate about helping others grow in their own faith and to share it with our communities.
- They will have experience relevant to helping us reach out to all age groups, including children, young people and families and to grow our congregations.
- Their preaching and prayers will be inspiring and effective.
- They will be comfortable leading, participating in and encouraging a wide range of worship styles and formats as well as the different traditions of the two parishes.
- They will have a track record of strong but servant leadership, not necessarily in ordained ministry (i.e. this could be their first incumbency), capable of delegating both responsibility and authority as well as being quick to identify talent and capacity in others and to encourage it.
- They will be an encouraging team leader, able to motivate individuals and teams and able to manage conflict.
- They will be a person to whom prayer is an essential part of their daily Christian walk and ministry.
- They will be a people person with good pastoral skills and be keen to be involved in people's lives and be a strong presence in the community. They will listen sympathetically, showing compassion and patience.
- They will have demonstrated both integrity and humility in all aspects of their lives.
- Alongside the whole Anglican communion we have been prayerfully engaging with the LLF process. At present we have arrived at the following position: The Incumbent would not conduct PLF/blessings for same-sex couples in either St James or St Margaret's churches but would be prepared to allow them to be conducted in St Margaret's by another licensed minister.



CHALLENGES FACING OUR CHURCHES

- There is a high proportion of people in both parishes who are not reached by the church. The new Incumbent will need to encourage new ways of doing so, particularly among young adults and families with children.
- Continuing and strengthening the cooperation between St Margaret's and St James' in order to communicate God's love for people in both communities more effectively.
- St James: Whilst we continue to attract committed Christians into the church our focus, shaped pre- pandemic, was to be "disciples making disciples". This needs to be re-energised and given sharper focus. This should involve prayer, teaching so as to enable our present congregation, together with creating more opportunities to interact with the community.
- St James' has a long-established ministry to children and young people. Resourcing this adequately with people has been challenging in recent times. The new Incumbent will need to work with the Youth and Children's Minister on this key part of the church's ministry.



ST MARGARET OF ANTIOCH, HEMINGFORD ABBOTS

ETHOS

St Margaret's is a traditional Anglican church aiming to serve a broad range of liturgical preferences in this small parish. The worship style reflects the age balance. It is estimated that 43% of the village are over 60 and 17% under 19. The number on the Church Electoral Roll is 54 and there is an encouraging regular attendance of 40-50. We are blessed with a beautiful and well maintained building. We are working on innovative ideas regarding worship and outreach to the village. We are a church of "doers", people ready and eager to step in and quietly help each other. We would like to be a more vibrant church, growing in love and worship of God and demonstrating this through active engagement in our village community. Currently we are making some progress, and we trust that God will guide us forward.



WORSHIP

For many years the church has offered a range of services each month to accommodate a variety of preferences as to the style and language used in the services: Sung Eucharist - from Common Worship; Holy Communion, Matins, Choral Evensong from BCP; and a lay led informal Family Service that attracts families from the village and is also enjoyed by the regular congregation.



Many in the congregation come from the village, others from Hemingford Grey, some from St Ives and other villages. Festival services attract many additional worshippers. Music at most services is led by the organ and the choir. Other instruments are also used, and a keyboard in the Family Service. Priests and lay ministers robe to lead worship.



Many people stay after the main Sunday service for coffee, tea and biscuits. This is a valued occasion for the congregation to chat, bond, welcome newcomers or plan events.



SPECIAL SERVICES

The special services throughout the church year are much appreciated and well attended by our congregation and visitors.

The Harvest Festival is followed by a harvest lunch or supper, with entertainment or guest speakers. On Remembrance Day we are usually joined by the British Legion, the Cubs, Scouts, Guides, and their parents.



All souls service always has a large attendance as this is a combined service with St James, as is the Riverside Service organised by them.



Christingle is very popular with adults as well as children.

A special pet service introduced this year brought many people – quite a few newcomers and their pet friends to church.

The Christmas Carol service by candlelight is well loved by many, the church is usually full. This year we are experimenting with joining forces with St James and have invited anyone from the villages to come and sing at Carol Services in both churches.

Come and Sing

in the
**Hemingfords'
Christmas
Choir**

All welcome to sing!

Carols will be sung twice on 17th December:
at St James', Hemingford Grey at 3pm
and at St Margaret's, Hemingford Abbots at 6:30pm

Fun rehearsals with mulled wine and stollen!

7pm Friday 8 December at St Margaret's Hemingford Abbots
3pm Sunday 10 December at St James' Hemingford Grey
7pm Friday 15 December at St Margaret's Hemingford Abbots

For more information contact:
Julia [redacted]
Li [redacted]



GROUPS

St Margaret's has members who faithfully volunteer in various groups, several of them serving in more than one group.

First to mention is the **PCC** who meet once a month and make the decisions facing all things connected with the running of the church.

Music is a highly-valued part of the worship tradition of St Margaret's and the small enthusiastic **choir** attracts many from beyond the village.

The **Flower Guild** decorate the church with flower arrangements during the church year and for festivals, weddings, funerals.

The biennial **Flower Festival** attracts thousands of visitors from a considerable distance. Church and village work together, the festival not only generating substantial financial support (£30,000 to £40,000 at each festival) but also fostering strong church-community links.



The six church bells are rung by a skilled group of **Bell Ringers** on the 1st and 3rd Sundays of the month and for special occasions such as weddings, Royal occasions etc. They are popular with visiting ringers due to the lovely setting of the church.

Small **prayer groups** sometimes get together for courses and prayer sessions, before Christmas or Easter.

The Friends of St Margaret's is a registered Charitable Trust set up to support the maintenance and improvement of the church building. The Friends hold the monies raised at the Flower Festival. The PCC and the Churchwardens liaise with the Trustees and prioritize what needs to be done to the building to keep it in excellent condition.



OUTREACH

Having a warm welcoming building, with recorded music playing, kept open and available to all during the day, as part of our outreach to the village and visitors is of utmost importance to us at St Margaret's, and the church is widely visited by people from the village and from outside.

A **Prayer Corner** in the south aisle provides a place where people can spend a quiet time and light a candle. We also use this corner for special displays during the church year - Easter, Mothering Sunday, Remembrance, Advent and Christmas, or for or special occasions - expressing solidarity with the people of Ukraine, the Platinum Jubilee of our late Queen Elizabeth II and later her funeral, and the coronation of King Charles.

During Advent and before Easter the PCC delivers a **card to every household** in the village, with our greetings for the season, the list of all the festive services and details of any special events.



We produce a **parish magazine** ten times a year, which is sent out in electronic format to most of the households (with paper copies still delivered where needed), providing regular communication between church and village alongside the Web pages.

Worthy of mentioning was the PCC's initiative of Advent Windows with a Christmas Carols theme in 2020, and repeated in 2021 with a Christmas icon theme. The church and village came together to organise these, helping the village and visitors in lock down to focus on walks round the village, and bringing people to the church as the final window for Christmas Day.

A mixed team from both churches participated in this year's CHCT 'Ride and Stride', visiting 5 churches. They sang a hymn in each of these places, with other visitors joining in.



The wider Church

St Margaret's has recently joined the Rocha UK Eco Church. We hope that this will be not only an opportunity to do something for our Earth but also create new friendships within the village and collaborations with other churches and organisations.

MISSION AND GIVING

Based on an earlier decision of the PCC, we give 10% of our yearly income to mission and charity.

Our CMS partners for the last 10 years have been Kylie and Bhim Bahadur, based in Northern India, with mission of raising awareness against human trafficking and domestic violence, and mobilising the church for social action.

We have been also supporting Mission Possible UK who work with marginalised people in a village of North-western Rwanda and lately with people in war affected Ukraine.

Our Family Service has, for several years, been supporting Boramungu a girl in Rwanda, through Compassion UK. Under their umbrella, several members of our congregation privately support other children.

FINANCES

St Margaret's Church is in a healthy state financially. For many years the Parish Share has been paid in full and at least 10% of the income is given to mission and charity. Regular donations are made through the Parish Giving Scheme, via standing orders and by cash or card at services.

St Margaret's church has no fixed assets and no employees. The grade 1 historic building is maintained in excellent condition. Many of the repair costs are financed by "The Friends of Saint Margaret's Church Hemingford Abbots", a charity with the sole purpose of supporting the maintenance, renovation and improvement of the fabric of the church and churchyard.

Here is a summary of the church's financial position for the year ending 31st December 2022.

Incoming resources = £61,400 including voluntary giving =£57,400
Resources expended = £48,100 including £15,800 in Parish Share

Cash assets = £114,000
Total assets =£370,800

Average income 2020-2022 = £51,600
Average expenditure 2020-2022= £44,900





THE PARISH CHURCH OF ST JAMES HEMINGFORD GREY

St James Hemingford Grey:

- Is ***Evangelical in tradition***, with an ethos to be disciples making disciples. It has a strong belief in the traditional doctrines and teaching of the Church of England.
- Enjoys sung worship as a strong feature, with a wide range of instrumentalists and vocalists.
- Has a long-established ministry to youth and children, employing a full time Youth and Children's Minister to lead this.
- Has a ***strong focus on world-wide ministry***, giving 15% of income to support ministry in the UK and overseas.
- Has a congregation spanning all ages but there are a number of mature (in faith, not implying age) Christians who have a thirst for deep teaching of the Word. An ability to provide this teaching at an appropriate level is important.
- Has 161 members on the Electoral Role.
- Has a long-standing tradition of encouraging and releasing emerging gifts of ministry among its members and encourages, resources and funds training for this, whether they remain at St James or move elsewhere.
- Is looking for an Incumbent with a strong belief in the traditional doctrines and teaching of the Church of England. They will have a strong and demonstrated commitment to the authority of scripture and a desire to instill this in others. They will also have ***a commitment to enabling the ministry of all believers and openness to the work and gifts of the Holy Spirit.***

OUR MINISTRY

- Our Vision - ***Lives transformed by Jesus***
- Our Mission
 - To grow together as disciples of Jesus
 - To demonstrate the kingdom of God
 - To proclaim Jesus as Lord
- Our Ethos
 - ***Disciples making disciples*** – every member enabled and active in using their God-given gifts to work with God in growing disciples and making new ones.
- Our aspiration
 - A loving, worshipping community of disciples on a journey together towards Jesus.
 - Welcoming and tolerant to all comers.
 - A safe and loving place for the vulnerable.
 - Outward looking and community facing



- Our Worship: Services at 10am on Sunday
 - Style varies through the month, from Holy Communion (once monthly), through Morning Worship of varying informality, to Café Church when there is a fifth Sunday in the month.
- Sung worship is a strong feature at St James' Our music group, all from within the church family, comprises vocalists, orchestral instruments, guitars, percussion and keyboard players who play together on a rota basis. We also have two competent organists. This gives great flexibility in accompanying our worship. We use a wide variety of traditional hymns and contemporary worship songs.
- We do not have a regular church choir, but at Christmas and Easter choirs are formed from the music team and the congregation to add four-part harmonies which enhance the worship at these two major festivals.



- Liturgy and hymn/song words are displayed on two large TV monitors as well as in hard copy.
- Average attendance over the last 6 months is 65 adults and 13 children. ***The friendly and welcoming nature of St James', its faithful children's and youth ministry and its evangelical teaching has, for many years, attracted to its congregation people from the surrounding villages and towns, currently making up about 50% of the congregation.***
- The service is live-streamed on YouTube, usually watched by about 10 devices.
- Holy Communion at 10.30am on the 2nd and 4th Wednesday each month except August.
- Funerals and Weddings –
 - 1 wedding in the last year.
 - 4 Church Funerals in the last 12 months
 - 4 Funerals at Crematorium
- Supported as required with leader, preacher, music, bells and vergers.
- The beautiful location of the church by the river makes the church a particularly popular venue for weddings in the spring and summer.



- Baptisms – usually part of the Sunday service – 1 in the last 12 months
- Since the pandemic, Zoom meetings for Morning Prayer (once a week,

attendance 2-3) and Night Prayer (every weekday night, attendance ~10) have been established and continue now.

OUR YOUTH, CHILDREN'S & FAMILIES MINISTRY

St James' has a long-established ministry to children and young people, **with our vision and aims for this ministry shaped by 2 Tim 3:14-15**. This ministry is led by Ben Pearson, a full time Youth and Children's Minister employed by St James Church PCC, aims to share and teach children and young people about the love of God and the good news of salvation found in Jesus Christ, raising them as disciples of Jesus.

Our regular groups to children and young people include:

- **First Steps;** a group for parents, grandparent and carers to bring children from 0 - 4 years old.
- **Jr Church;** This is a mix of fun, memory verse, craft time, music and a talk from the bible. Anyone aged 3-11 is able to join. Currently 13 children under 10 attend regularly.
- **Youth on Sundays;** Youth bible study group. A chance to catch up with each other, listen to God's word, play games and pray for each other. Ten young people aged 11-16 meet on Sunday morning.
- **Senior Teenage Boys Bible Study;** A focused time looking at God's word together. Four young guys attend this at present.
- **Dads' breakfast** in the Parish Centre which aims to engage with local families, particularly dads who attend with their children.
- **Dads' camping weekend** held on a local farm in summer providing an opportunity for fun and fellowship for dads and their children.

Over the years the young people have attended the Keswick Convention, enjoyed socials together and the youth summer barbecue is a particular highlight. At Christmas we invite all the classes from the local primary school to come to the church for a Christmas service, as in photos overleaf

In addition, there are plans to begin a Sunday afternoon group for older teenage girls and a mid-week group for younger children.

For parents and families we have come together for family seminars to help parents think more about what it means to disciple their children at home and more recently Family Tea.

Our aim for all our groups and ministry is to provide a safe and welcoming environment where children and young people can hear the good news of Jesus Christ. All leaders and helpers are safely recruited and have full safeguarding training.





Going forwards ***some areas to develop would include our local community engagement and how we could establish an annual holiday club for primary school aged children.***

THE MINISTRY TEAM

St James Church is in Huntingdon Deanery. The patronage of St James was transferred to the Church Pastoral Aid Society in 2002.

The Ministry team to date:

Vicar (in vacancy)

Youth and Children's Minister (Full Time Paid)

Retired Priests x 1

LLMs x 2

ALMs x 1

(One ALM is in Training (Pastoral Care) and we have someone likely to start a Foundations of Ministry course in 2024).

THE CHURCH BUILDING

The church of St James stands on the right bank of the River Ouse at the west end of the village. The church comprises the Nave, Chancel, North and South Aisles, the West Tower, in the base of which there is a kitchen and toilet, the Clearstory, the South Porch and Vestry. The walls are of rubble with a dressing of Barnack stone, and the roofs are covered with slates, copper and lead. The earliest parts of the building are of late 12th century. The tower was once surmounted by a spire, but this was blown down in a storm in 1741, leaving the present stump. The building was completely restored in 1859 and the West Tower was restored in 1914. Extensive repairs were carried out on the roof, exterior walls and drainage during 2009 and extensive interior



restoration is an ongoing requirement. The building is heated by a blown air heating system. The lighting and sound system is contemporary with large monitor screens for displaying hymn words and liturgy, a hearing loop system, and a broadband connection and equipment for streaming services. The pews have been replaced by wooden chairs and the church can comfortably seat 200 people. The tower contains a peel of eight bells which are rung regularly before services, weddings and at festivals.

The last Quinquennial Inspection was performed in December 2021 and found no major issue with the building. It found that most of the church was in good condition, although there were various areas of damp in the walls, resulting in plaster loss.

THE PARISH CENTRE

The Parish Centre, under diocesan ownership but parish operation, is located on the High Street at the centre of the village. ***It is the beating heart and hub for many Church and parish activities.*** Situated about a quarter of a mile from the Church, it was formerly the village School and School Master's Cottage. It is a Grade II listed building.

The ground floor of the Parish Centre comprises a Reception Area, large Hall, ***a fully equipped Professional Kitchen and a bright, contemporary Coffee Shop*** with media display screens. There is a pleasant, Outdoor Courtyard containing additional tables and chairs. Upstairs is the Parish Office and a Prayer/Quiet Room. There are storage facilities on both levels. Much of the Youth, Children's and Families work takes place on the premises, both on a Sunday and mid-week. The Cafe is currently operating twice a week to provide a 'Warm Space'. The Hall is used for Parish Lunches, Meetings, Funeral Teas, Training etc. and hired to various Village organisations throughout the week.



THE VICARAGE

The vicarage is a modern four-bedroom house located close to the centre of the village and 5 minutes' walk from the church. The house comprises a good-sized living/dining room, a small office/TV room, kitchen, utility room, shower room and toilet, and a substantial study and office on the ground floor. Upstairs there are four bedrooms and a family bathroom.



ADMINISTRATION

The church employs an Operations Manager who works four days a week in the Parish Centre and provides administration support to both parishes. She is assisted by another employee who works as receptionist and administration assistant. A qualified accountant is also employed to provide bookkeeping and accountancy support to the PCC Treasurer.

SAFEGUARDING

A Parish Safeguarding Officer is appointed to cover both parishes. Both parishes are compliant with Church of England safeguarding requirements in accordance with House of Bishops directives and the Parish Safeguarding Handbook.

SMALL GROUPS

Fifteen small groups meet at different times of the day and throughout the week. These have a variety of characteristics, some focus on prayer, others on Bible study and all enjoy fellowship. Small Groups choose their own study programmes.

PASTORAL CARE

Much pastoral care takes place in the small groups but recently a small pastoral team has been established. The team's five members meet bimonthly to review the care required to meet pastoral needs of the church family that have



been brought to their attention. They exercise this care with full regard to confidentiality and safeguarding. Another role of the Pastoral team is to pay attention to those who may be newcomers, and also to notice if any of the church family have not been around.

For those that are not able to receive the church's weekly emails (Thought4StJames), a monthly newsletter, entitled AT HOME is delivered to their door.

MISSION

St James Church aims to help resource the body of Christ in its mission to bring good news in word and deed to a needy world, within the UK and overseas.

The Church encourages members to respond to the call to serve God as 'ministers in the marketplace' wherever they are. PCC has delegated responsibility for implementing the strategy and allocating the PCC's budget to the World Mission working group. The working group proposes new mission partners to the PCCS and encourages church members to be involved with mission through prayer, volunteering and giving. About 15% of the church's income is given to mission, in this country and beyond.

In this country, as well as the local outreach and mission of all parts of the church, ***there is a church-owned house available for housing homeless families, in collaboration with the charity Hope into Action*** and a good visiting relationship with the local care home, Field lodge. We also fund CPAS mission work in a small way.

Worldwide, current and recent church members are working in mission.

- A current member works as a doctor in a Christian Hospital in northern Pakistan as a respiratory physician, leading and developing this aspect of the hospital's work and also supporting the small local church.
- A current member works in the UK support office and a previous member in the German office of CBM. CBM works to improve life for those with disabilities in many developing countries.
- A previous church member is a mission partner of CMS. He established Jigsaw, a work among slum families in the Philippines and now supports the work from UK.
- A current member (an ex-missionary with Tearfund and Mission Aviation Fellowship) is a Volunteer Speaker for MAF.

In addition, we support a couple working with Wycliffe Bible Translators in West Africa and a Nepali woman volunteering with DAI in Nepal, teaching young Christians leadership, management and ethics. From time to time we have special collections to support Tearfund, CBM and others with money especially for relief work.



CHURCHWARDENS AND PCC

In 2010 St James Church was registered as an independent charity (No. 1132817), with the subsequent change in status of PCC members to that of trustees. The PCC currently has 15 members and meets monthly in the Parish Centre.

FINANCE

The finances of the parish are managed by the finance committee which is led by the treasurer and reports to the PCC. The finance committee establishes an annual budget at the end of each financial year (December) which is approved by the PCC.

The parish is committed to giving 15% of the income to the general fund to Mission and has met its parish share in full for the past five years.

The principal fixed assets of the parish are two residential houses and a parish centre. One of the houses is used to house the Youth and Children's Minister, the second is let through the Hope Into Action charity.

Principle financial statistics are given in the table.

RESERVE CASH ASSETS 2022	£129,000
INCOME	
Average Parish Income 2018 - 2022	£233,000
Parish Income 2022	£206,000
Income Voluntary Giving 2022	£185,000
Investment Income	£7,000
EXPENDITURE	
Average Expenditure 2018 - 2022	£230,000
Total Expenditure 2022	£215,000
Parish Share 2022	£63,000
Staff costs	£65,000
Mission and Charitable Giving	£40,000
Repairs and Maintenance	£5,000



APPENDIX A_ DIOCESE AND DEANERY

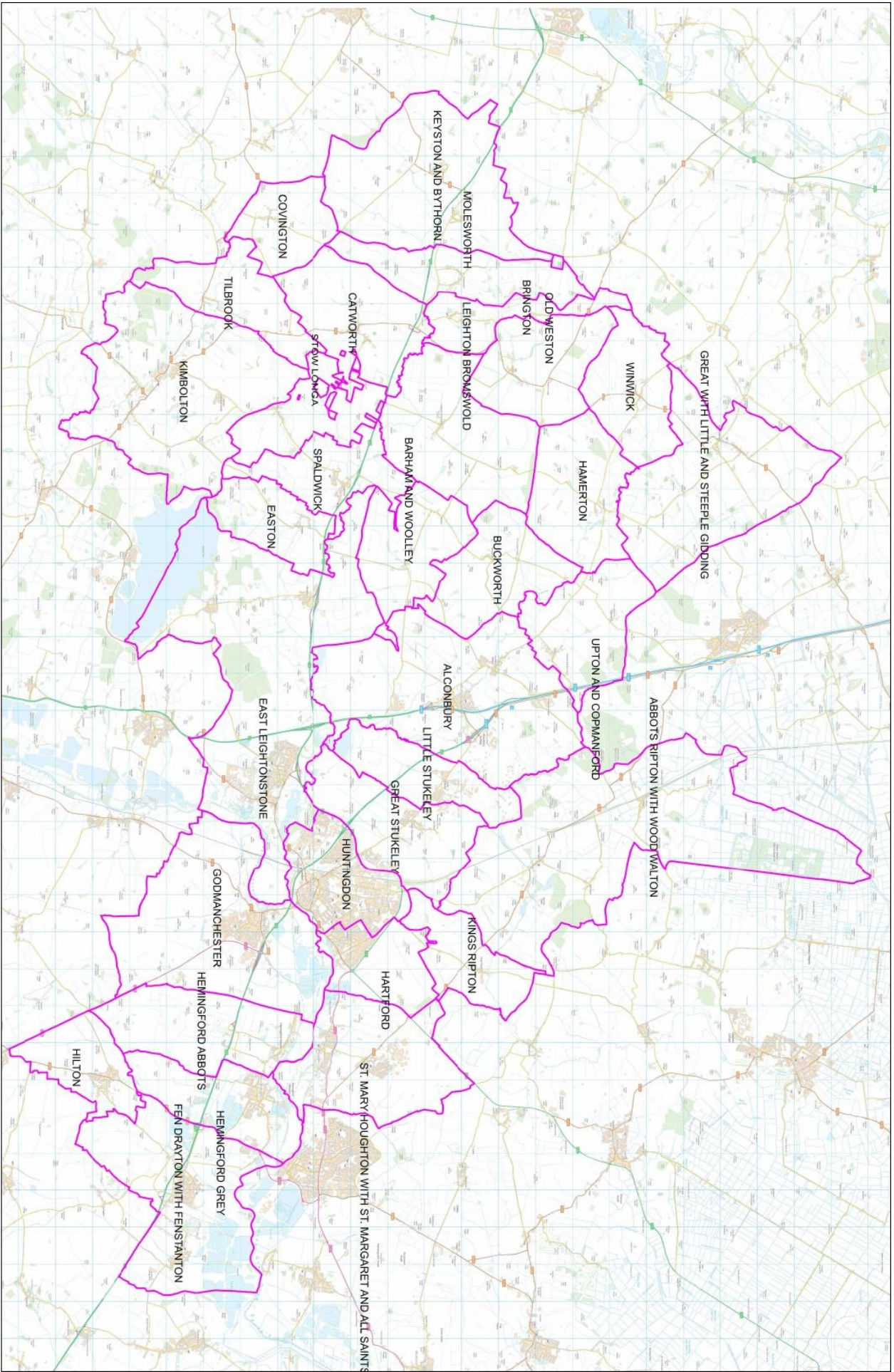
Ely Diocese covers an area of 1,507 sq. miles with a population of 770,000 and 339 churches. It comprises the County of Cambridgeshire, together with part of West Norfolk and that part of Peterborough south of the River Nene.

Ely Diocese document 'People Fully Alive: A Strategy for Growth Ely 2025' was published in September 2015 after a widespread consultation. It is available online at <https://d3hgrrlq6yacptf.cloudfront.net/5f0f7281dadce/content/pages/documents/1568816812194915186.pdf>

The Archdeaconry of Huntingdon and Wisbech, about half of the Diocese, is made up of eight **Deaneries** with 166 parishes.

Huntingdon Deanery is comprised of 10 benefices and 33 parishes. There are 10 stipendiary clergy, 7 clergy with PTO and 15 lay ministers (LLMs & ALMs). Its population of 34,000 is spread over 139 square miles.

Hemingford Abbots Parish had a population of 635 at the 2011 census and adjacent Hemingford Grey Parish had 2,524. The Vicar of Hemingford Grey was priest-in-charge of Hemingford Abbots from 2004 to 2022.



Huntingdon Deanery



APPENDIX B DESCRIPTION OF THE PARISH OF HEMINGFORD ABBOTS

Hemingford Abbots is a small village by the south side of the River Ouse between the towns of St Ives and Godmanchester / Huntingdon. There are excellent road links to the south on the M11; to the north and south on the A1M, and east and west on the A14.

It has not changed much in size in recent years but has evolved from a predominately rural community to one where employment, families and holidays involve people travelling far and wide.

There is a guided bus from St Ives to the centre of Cambridge and a train service from Huntingdon to London and the north.

The towns of Godmanchester, Huntingdon and St Ives are each within five miles and contain major public facilities such as hospitals, surgeries, community centres, schools and shopping areas. There is a food shop, post office and primary school in Hemingford Grey. There are village halls and pubs in both Hemingfords, the thatched 'Axe and Compass' being a particular feature in the centre of Hemingford Abbots. Its bars, activities and dining room attract customers from a wide area.

The National Trust's improvements at Houghton Mill, together with the river and camping sites at Houghton and Hemingford Abbots help to attract many tourists to the area.

APPENDIX C HEMINGFORD ABBOTS - BUILDINGS AND HISTORY

There has been a church building on the present site for over a thousand years and a priest was mentioned in the Domesday survey of 1086. The early church was built on the site of the present chancel soon after the land was granted in 974. The earliest stone church was built around 1190. The fine spire was built in the 15th century. The ceiling in the Nave including 22 carved angels dates from the late 15th century and early 16th century.



The Chancel was rebuilt in 1912-13 when the east window was donated by the parish in memory of Henry Herbert who had been rector from 1867 to 1911.

The tower screen and two of the windows were engraved with biblical quotations by a skilled member of the congregation, Dr. David Peace. The tower screen was engraved in 1974 to commemorate a thousand years of worship here.

The pipe organ was built by Norman and Beard in 1906. It has two 58 key manuals and a 30 key pedalboard. It has had a number of enhancements over the years and is regularly maintained by Norman Hall & Sons of Cambridge. It is used at most services and is much valued by the congregation and choir.

Five bells were installed in 1754 and a sixth was added in 1897. They were all re-hung in 1994 and are in regular use.

In 2001 an extension containing a kitchen and cloakroom was added onto the north aisle.

There is no church hall but many functions associated with and organized by the church take place in the village hall nearby. The hall was erected in 2004 with assistance from the Millennium Fund and is well used by residents and visiting groups.

The Old Rectory was home of the late Lord Hemingford, the Patron, whose father purchased it from the church in 1949. The New Rectory, built in the 1960s, is currently home to Rev Canon Mike Booker, Associate Vicar of Huntingdon. The recent priest-in-charge lived in the Vicarage in Hemingford Grey.

Improvements in the last 10 years

The church clock has recently been repainted and gold leafed.

The path has been changed from gravel to a resin compound to aid wheel chairs.



CCTV has been fitted on the roof to protect the lead from being stolen.

CCTV has been fitted to cover some areas inside the church.

The tower and walls other than the spire have been re pointed.

The boundary walls have been re capped and poor areas replaced.

After modifying the floor for wheel chair access to the communion rail the chancel, sanctuary and part of the nave aisle were re-carpeted.

The south door had a ramp which was replaced by lowering the adjacent floor.

A spiral staircase has been fitted in the tower to replace a vertical ladder. The staircase enables easy access to the clock room and up to the bell room. This allowed us to de-rust the bell cage and treat it. Extra lighting has been fitted at the top of the staircase and in the bell and clock room.



APPENDIX D DESCRIPTION OF HEMINGFORD GREY VILLAGE



Hemingford Grey is a riverside village which, at the 1991 census, had 1085 dwellings and 2068 on its electoral roll. Hemingford Grey's population has grown significantly in recent years. Between 2011 and 2018 it grew by about 20 per cent, from 2,500 to 3,000, The number of dwellings in the parish grew from 1,150 to 1,368 over this period. The increase is largely due to the most recent development in the parish, known as the 'Yes estate', which is situated on London Road. This is less than a mile from St Ives town centre while the core of the village retains a distinct 'village feel' with a clear rural hinterland surrounding it. Its nearest village neighbours are Hemingford Abbots to the west and Fenstanton to the southeast.

Hemingford Grey is much the larger of the two Hemingford villages with housing extending the built-up area to the south and east. On the Parish boundary, along London Road, are several industrial developments, and the handsome building which once housed St Ives workhouse has been converted for residential use. The old village centre has great charm with several 18th and 19th Century houses. At the end of the High Street is the Norman Manor House, which was restored by the children's writer, Lucy Boston, and is open to the public by prior arrangement. The Glebe is a 16th Century half-timbered, thatched building, whilst the beautiful medieval church, with its unique truncated spire, is close to the riverbank at the end of Church Street.

The village has a county primary school, but after the age of eleven most children go to the nearest Comprehensive School in St Ives, 2 miles away.



The village has a well stocked and well-priced Budgen supermarket which contains a post office but villagers must go outside the village for health care services. The village pub, The Cock, has real ales and an award-winning restaurant. Visitors can be accommodated at The Willows guest houses in the village.



The Sports and Social Club is a focus for activities in the village. There are cricket and football teams and facilities for tennis, bowls and squash. Organisations and societies abound in the village many of which meet in the village Reading Rooms located next to the Parish Centre. When meetings occur simultaneously in both buildings, parking is a problem! The village has its own Parish Council and is in the Huntingdonshire District of Cambridgeshire.

APPENDIX E CONTACT DETAILS

HEMINGFORD ABBOTS

Daniela Spilca – Churchwarden

Telephone: 07722 587759

Email: dspilca@yahoo.com



David Wordsworth – Churchwarden

Telephone: 07876 776605

Email: thewordsworths@yahoo.com



HEMINGFORD GREY

Mike Pinnock – Churchwarden

Telephone: 07787 669325

Email: mike.pinnock@talktalk.net



Ian Sinkinson – Churchwarden

Telephone: 07892 72019

Email: ian.sinkinson038@gmail.com



PARISH CENTRE

Telephone: 01480 467250

Email: admin@churchbytheriver.org.uk

ARCHDEACON

The Ven. Richard Harlow

Archdeacon of Huntingdon & Wisbech

Telephone: 07415757527

Email: archdeacon.handw@elydiocese.org