



A loving  
**heart** in the  
community

Stanground, Farcet & Fletton C of E Churches

# Welcome



# Our Vision is:

- To be four congregations working together for a common good
- To serve spiritually a population of 35,000 to the south of the City of Peterborough
- To increase and diversify our congregations
- To reach out to new and growing housing developments
- To increase the knowledge and skills base of our congregations to further sustain and fulfil our mission
- To share our gifts and expertise to make a bigger difference for Christ in our communities





**St Margaret's Fletton**



**St John's Stanground**



**St Mary's Farcet**



**St Michael's Stanground**



# Our Current Situation

- Four churches and three PCCs
- Two Benefices acting as one
- Regular Church Warden meetings
- Centralised Benefice Safeguarding
- Church services ranging from traditional to contemporary – something for everyone
- All churches have audio systems
- Audio visual at St Michael's
- All churches hold well attended social /fund raising events
- All four churches support the local charity: Mary's Child
- We share our churches to other Christian denominations
- There is a well maintained 4 bedroom rectory



# Our Team of Stars – We Have...

- An active retired priest: Kevin.
- Children and families and youth work ALMs: Kelly and Esther.
- A parish administrator: Emma.
- A team of nine active churchwardens and assistants.
- A trained pastoral care team.
- A prayer team.
- A fundraising team.



# Our Team of Stars – We Have...

- A robed choir and servers at St John's.
- A group of singers at St Michael's.
- An organist at St Margaret's.
- A bell tower captain and a team of bell ringers.
- A caretaker and lead gardener at St Michael's: Esther and Colin.
- An active band of volunteers serving refreshments after services and events and supporting our Community Café.
- Three competent PCC teams and a designated Safeguarding Officer who has a named representative in each Church.



# Our Activities

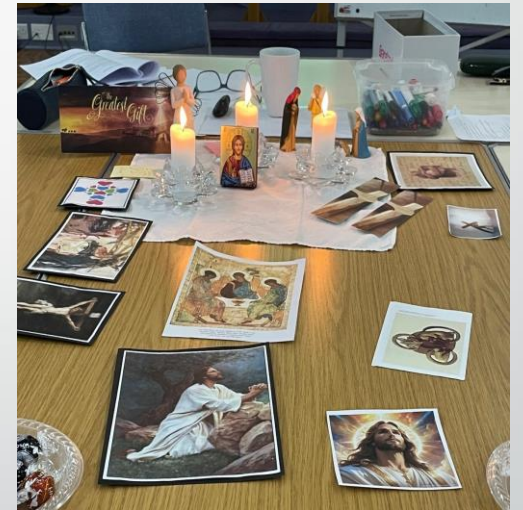
- Work in our church and state Schools plays a big part in our ministry.
- In conjunction with our partner charity (Mary's Child set up by our former Pioneer Priest) we host a regular Wednesday Café feeding up to 150 people. This is hugely popular with our community.
- As well as our regular worship we have large numbers of Occasional Offices with many Baptisms, Weddings and Funerals providing great opportunities to reach into our communities.





# Our Activities

- A weekly prayer group.
- A fortnightly bible study group.
- A Youth Group using the Youth Alpha course.
- Ongoing Confirmation classes.
- A reflections group for those bereaved and in need of companionship.
- Monthly Coffee Mornings are popular as is Bingo.
- A Mothers' Union branch.
- A weekly Gardening Club.
- Seasonal and special events and activities.





# Our Finances

- For many years we have paid our ministry share in full and anticipate to be able to do so in the future.
- We employ our own Benefice Administrator.
- We maintain, insure and heat our buildings for mission and worship.
- We achieve this by regular giving on the open plate, standing order and electronic donations.
- We let our buildings, especially the church and hall at St Michael's.
- We are active in obtaining grants.
- Summary benefice figures
  - Income £110,494
  - Parish share £38,442
  - Other expenses £59,488
  - Income over expenses £12,564
- Accounts will be available for your information.



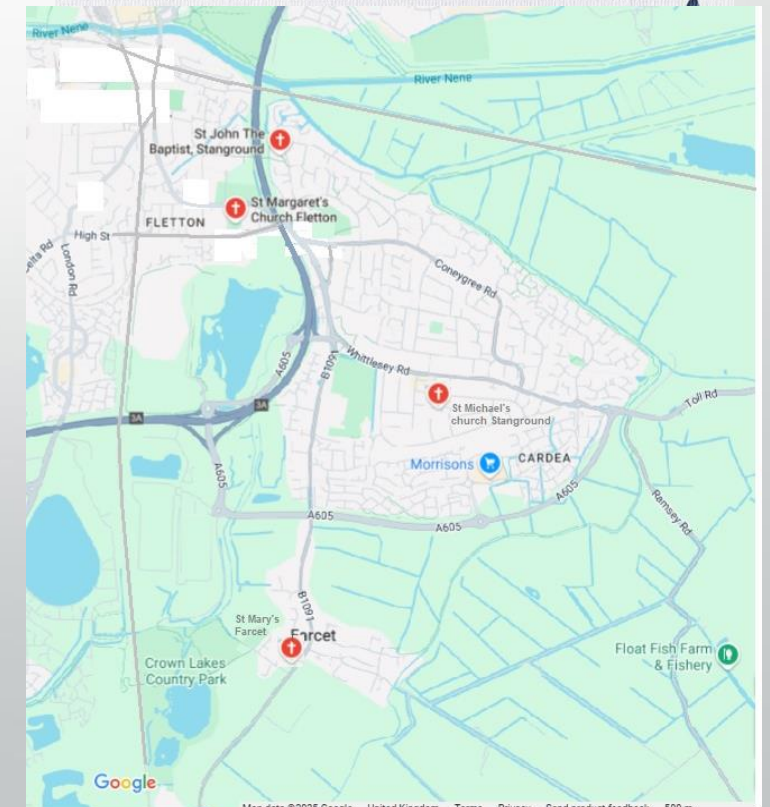
# Our Hopes and Dreams

We believe God spoke to us through the following text at the start of the year Isaiah 43:18-19

- We are hoping that we are about to know a fresh and dynamic outpouring of God's Holy Spirit!
- We are praying that God will use us to reach out into our local community with the Good News of Our Lord and Saviour Jesus Christ.
- To strengthen our links with our local communities.
- That God will build His Church and save this land especially our bit of it.

Forget the former things;  
do not dwell on the past.  
*See, I am doing a new thing*  
Now it springs up; do you not perceive it?  
I am making a way in the wilderness  
and streams in the wasteland.

Isaiah 43 :18-19





# What we hope for in You

We have been praying for God to call you to come and lead us and we believe that God has heard and is answering our prayer.

We want you to be a Spirit-filled team builder, who together with us, will seek God's vision and bring it into being.

We do not expect you to be a super-saint or a super-hero.

We want you to be a bold, bible-believing, leader and proclaimer.

We want you to have a loving pastoral heart.

We look forward to meeting you.



# Some thoughts from our congregations:

*Funny, happy,  
smiley and a  
homely sort?*

*A good biblical  
teacher and  
preacher – true  
to God's word?*

*Enthusiastic,  
encouraging  
and not  
judgemental?*

*Interested in  
music, maybe a  
guitar player, a fan  
of modern worship  
hymns?*

*Organised, a  
problem solver,  
flexible, have  
some new  
ideas?*



A loving  
**heart** in the  
community

Stanground, Farcet & Fletton C of E Churches



# Some thoughts from our congregations:

*I am grateful for what the Lord will give us and will welcome the new priest with love*

*Have a heart for understanding our diverse community?*

*Have a good connection with kids, understand nowadays lingo as well as being fluent in vicar speak?*

*Help explain how bible has answers to our problems?*

*Enjoy working with schools?*



A loving  
**heart** in the  
community

Stanground, Farcet & Fletton C of E Churches



# Rectory

Four bedrooms one en suite

Three reception rooms

Modern rectory layout

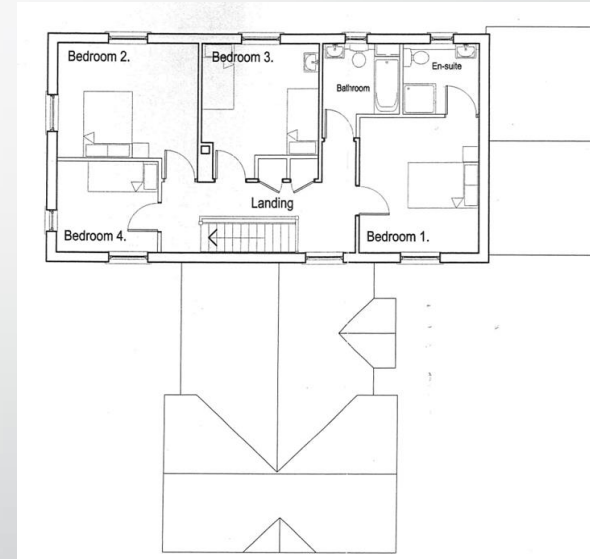
Garage parking

Easily maintained medium garden

Recently re-roofed and re-furbished

Gas C/H and double glazed

Well located





# Peterborough Attractions

- **Great travel links**
  - Rail: On East Coast mainline (45 minutes to London)
  - Road: On A1 (M), great national connections
  - Air: Stansted 75 miles, Gatwick direct rail connection
- **Close to**
  - Stamford, Cambridge, Oundle, Rutland Water, Burghley House
- **Leisure**
  - Key, New and Cresset theatre
  - Peterborough Museum and Flag Fen
  - Nene Park
  - Championship football side
  - Nene Valley Railway and Wildlife Haven
- **Shopping**
  - Queensgate shopping centre, Serpentine Green, Brotherhood retail park
- **Medical and Schools**
  - Peterborough City Hospital, Addenbrookes
  - The Kings School



# Websites of interest

## Ely Diocese

<https://www.elydiocese.org/>

## Stanground Churches

<https://www.stangroundcofechurches.co.uk/>

## St Margaret's Fletton

<https://www.achurchnearyou.com/church/13938/>

## St Mary's Farcet

<https://www.achurchnearyou.com/church/13937/>

## Facebook

[https://www.facebook.com/StangroundCofEChurches/?locale=en\\_GB](https://www.facebook.com/StangroundCofEChurches/?locale=en_GB)

[https://www.facebook.com/StMargaretsChurchFletton/?locale=en\\_GB](https://www.facebook.com/StMargaretsChurchFletton/?locale=en_GB)

## Church Schools

<https://stangroundstjohns.demat.org.uk/>

<https://www.stmichaelschurchschool.co.uk/>

<https://farcet.demat.org.uk/>







A loving  
**heart** in the  
community

Stanground, Farcet & Fletton C of E Churches